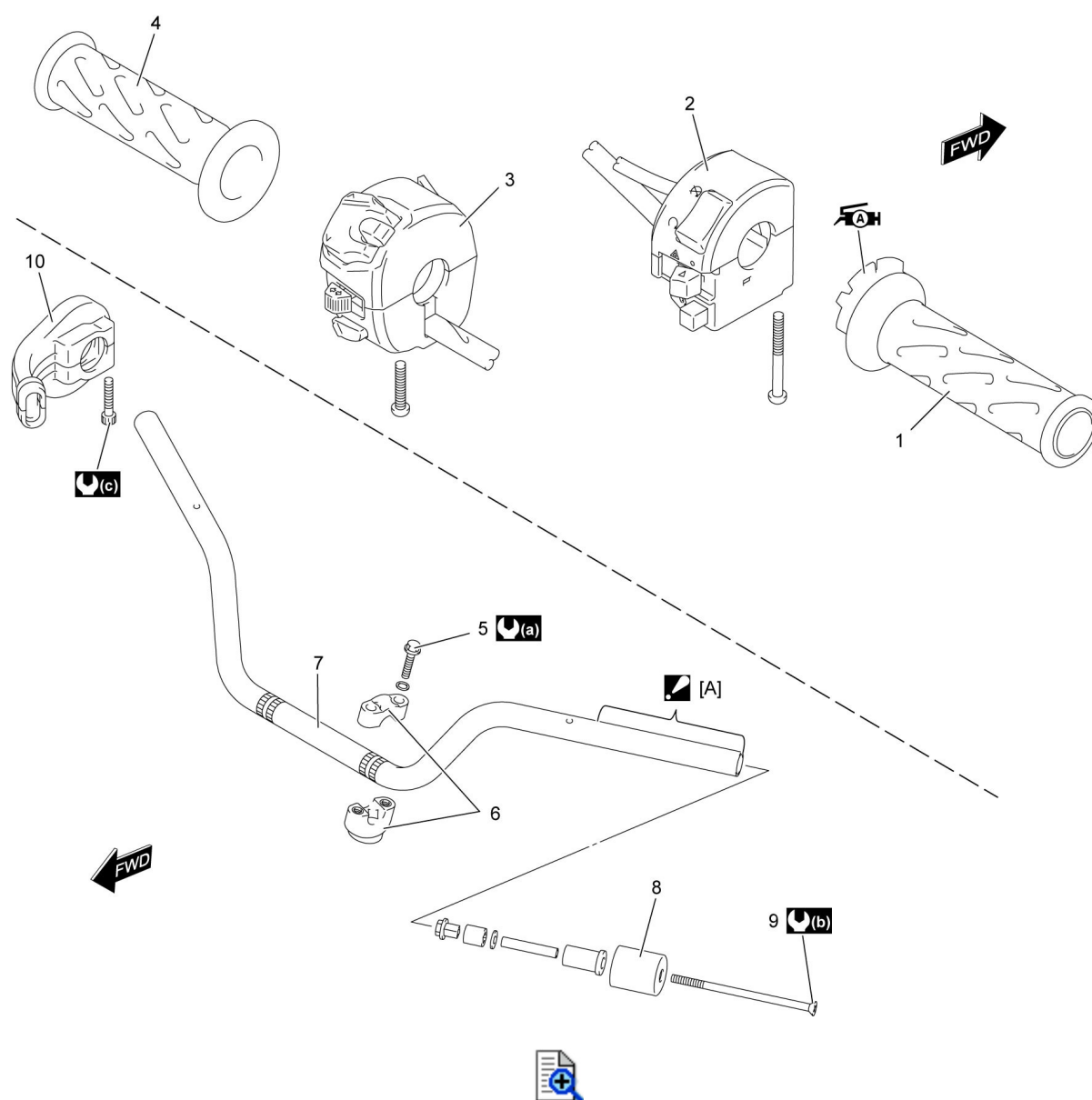







6B



## Handlebar Components



 [A]:	Apply handle grip glue.	4.	Left handlebar grip	8.	Handlebar balancer	 (b):	5.5 N·m (0.55 kgf-m, 4.0 lbf-ft)
1.	Throttle grip	5.	Handlebar clamp bolt	9.	Handlebar balancer screw	 (c):	3 N·m (0.3 kgf-m, 2.5 lbf-ft)
2.	Right handlebar switch box	6.	Handlebar holder	10.	Throttle case	 [A]:	Apply grease.
3.	Left handlebar switch box	7.	Handlebars	 (a):	23 N·m (2.3 kgf-m, 17.0 lbf-ft)		